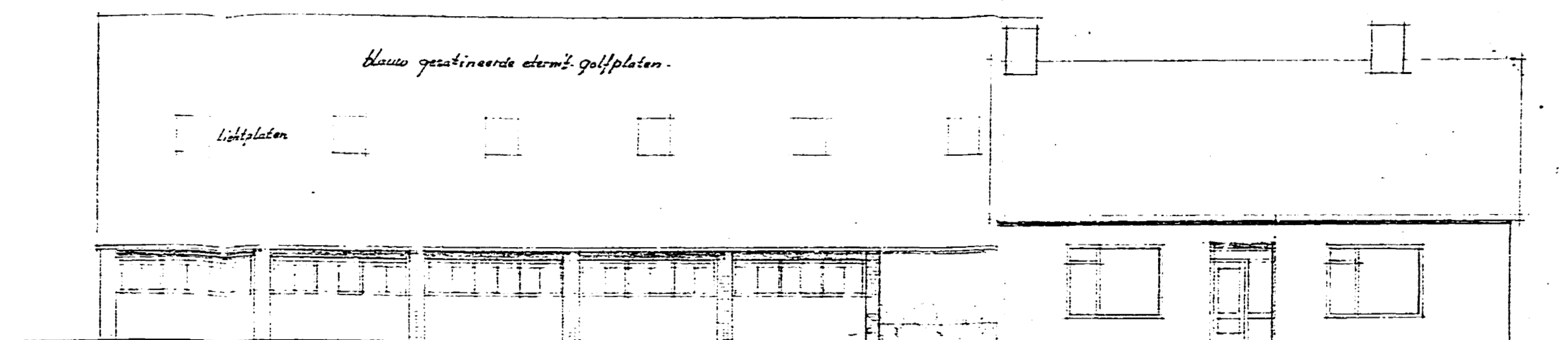
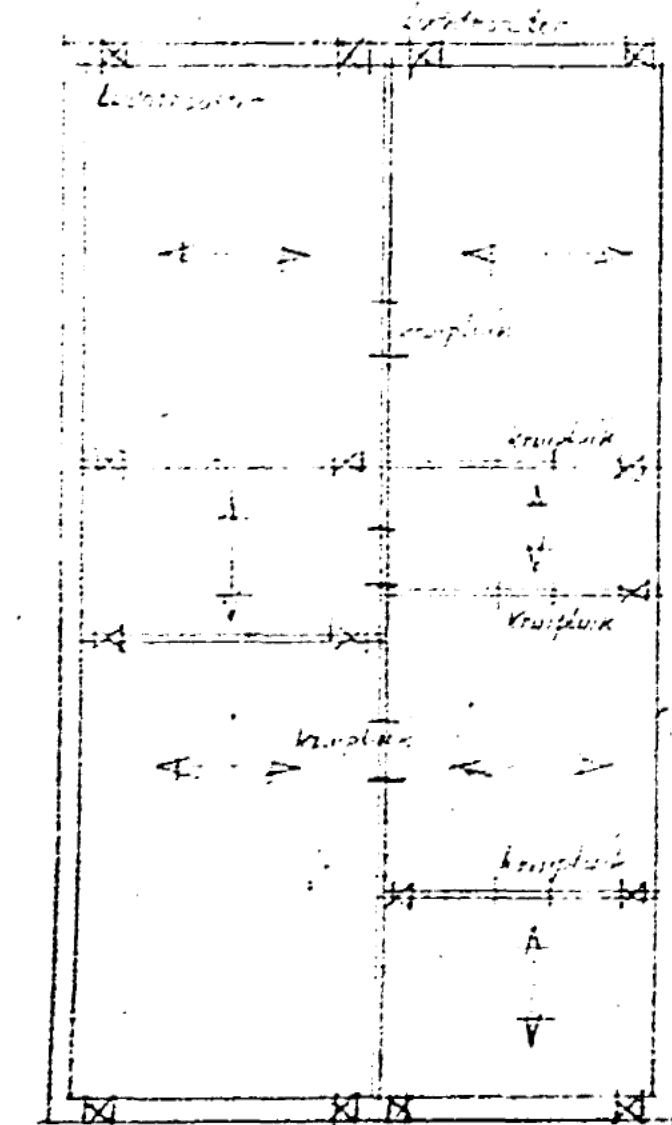
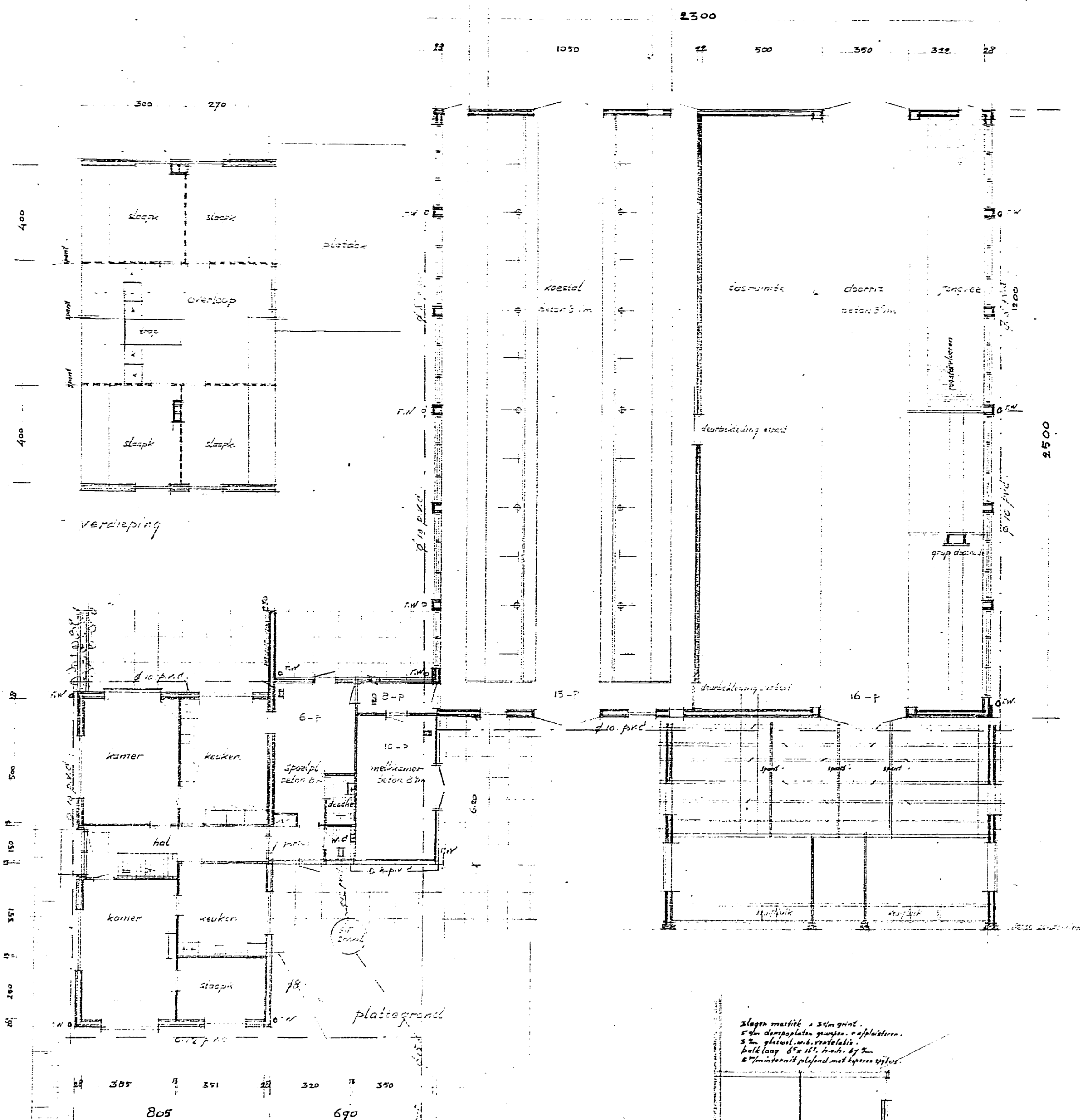


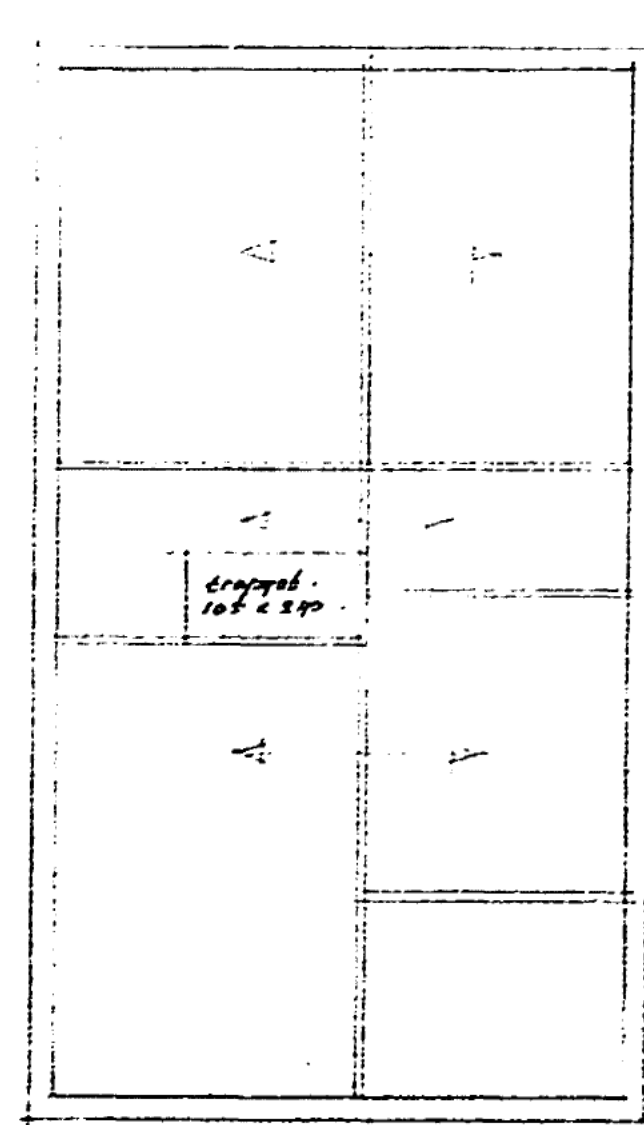
Voorgevel



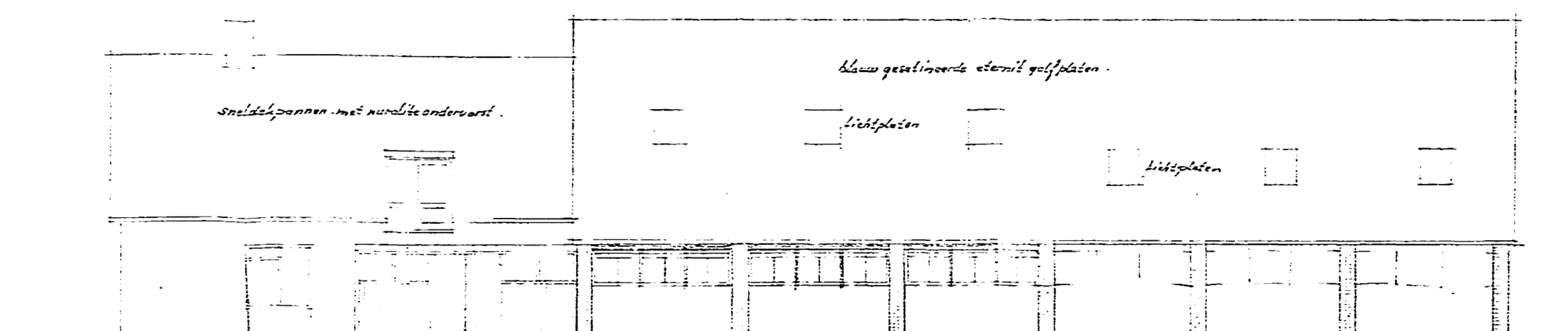
Zijgevel



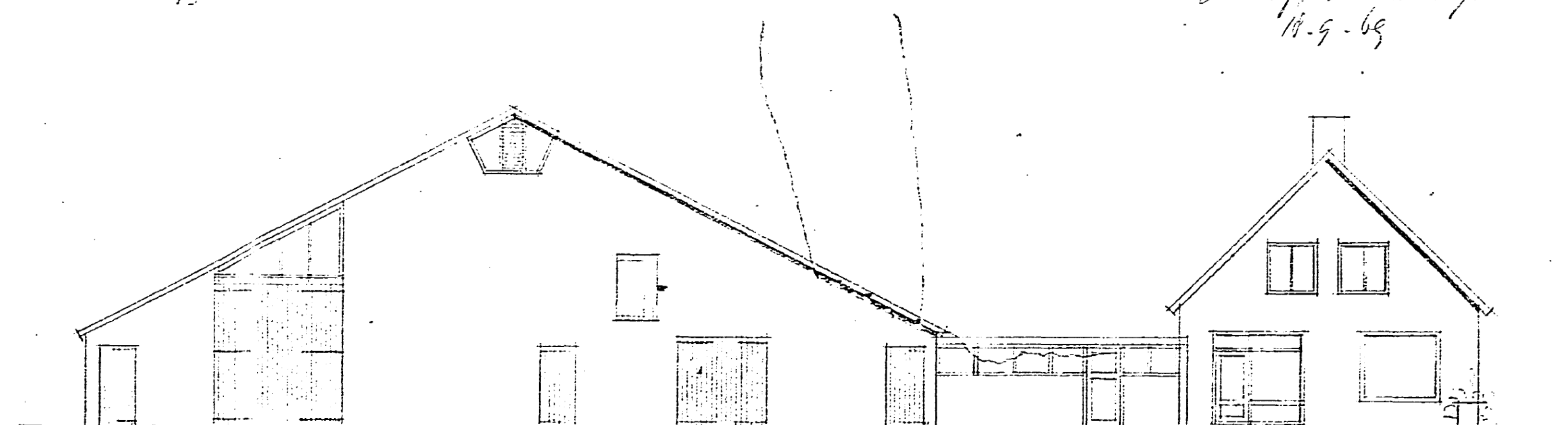
begane grond, halle baksteen vloeren
nutt. bet. 200 kg m²



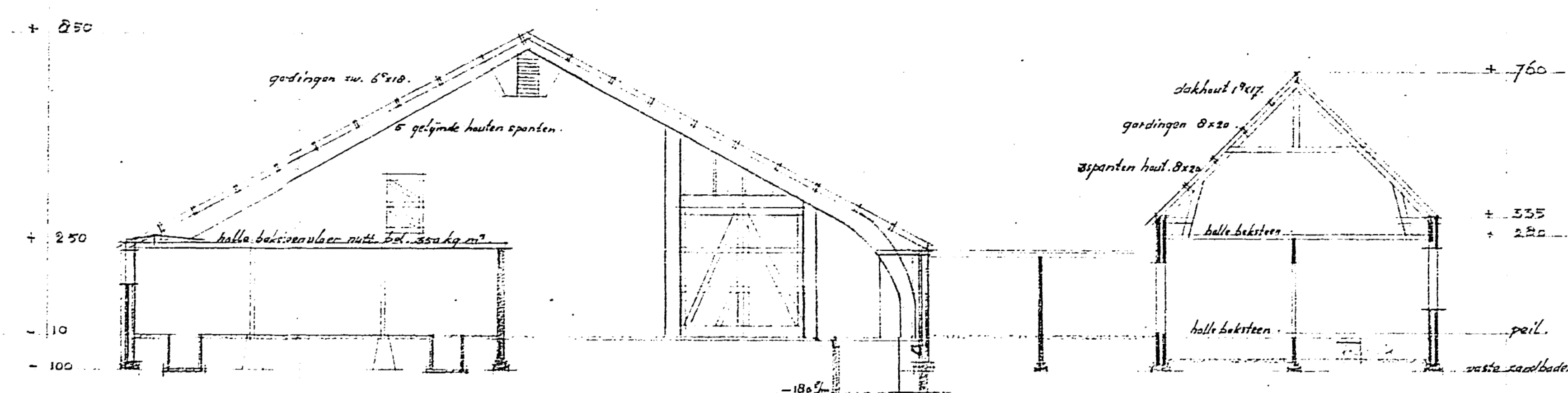
verdieping, halle baksteen vloeren
nutt. bet. 200 kg m²



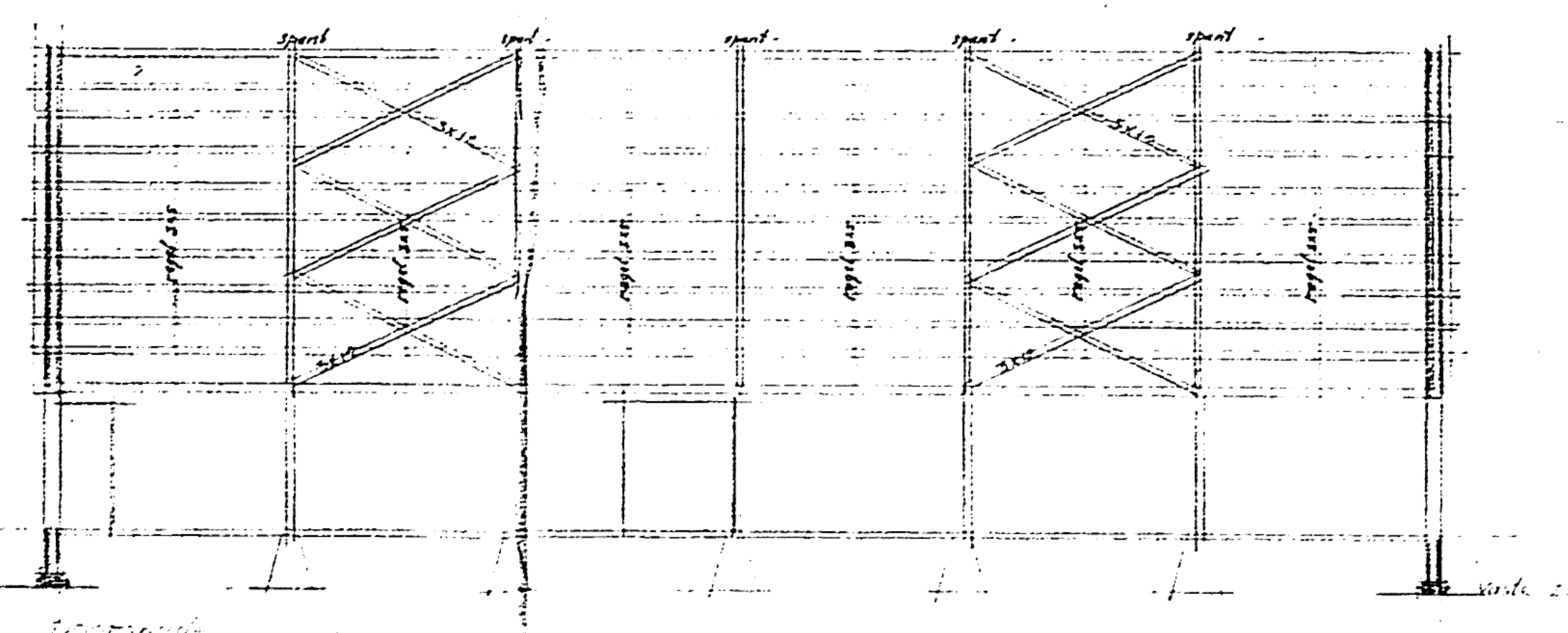
Achtergevel



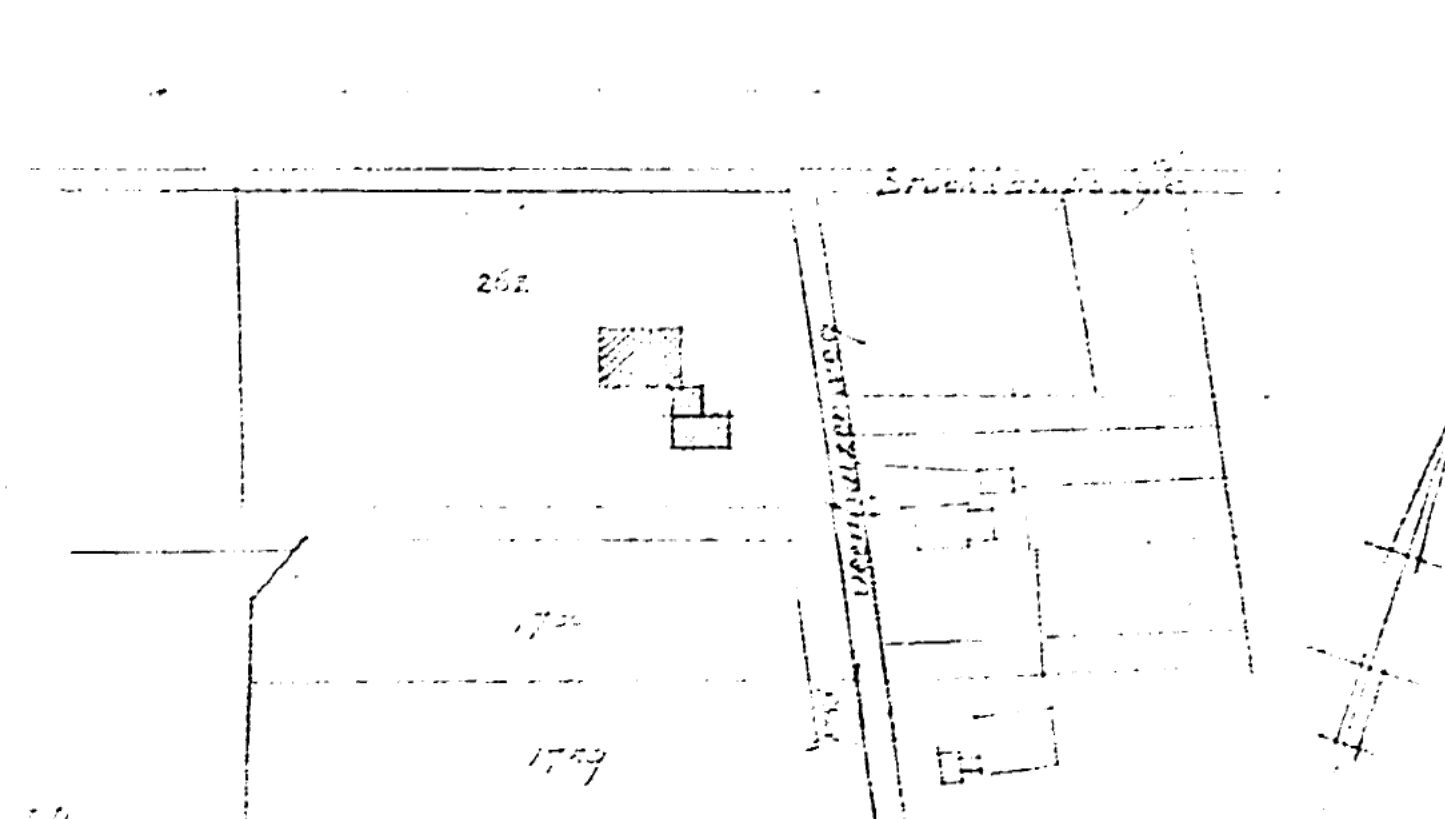
Achtergevel



Doorsnede A-A



Doorsnede B-B



siluette schaal 1:2500
gemeente Dalen - sectie A - no 262

Architect:
plan voor herbouw bestaande
van
schaal 1:200

no 645
Bekend bij bestek van
Burgemeester en Wethouders
der gemeente DALEN
d.d. 25 aug. 1969
P. J. Schouten
De Bureaude